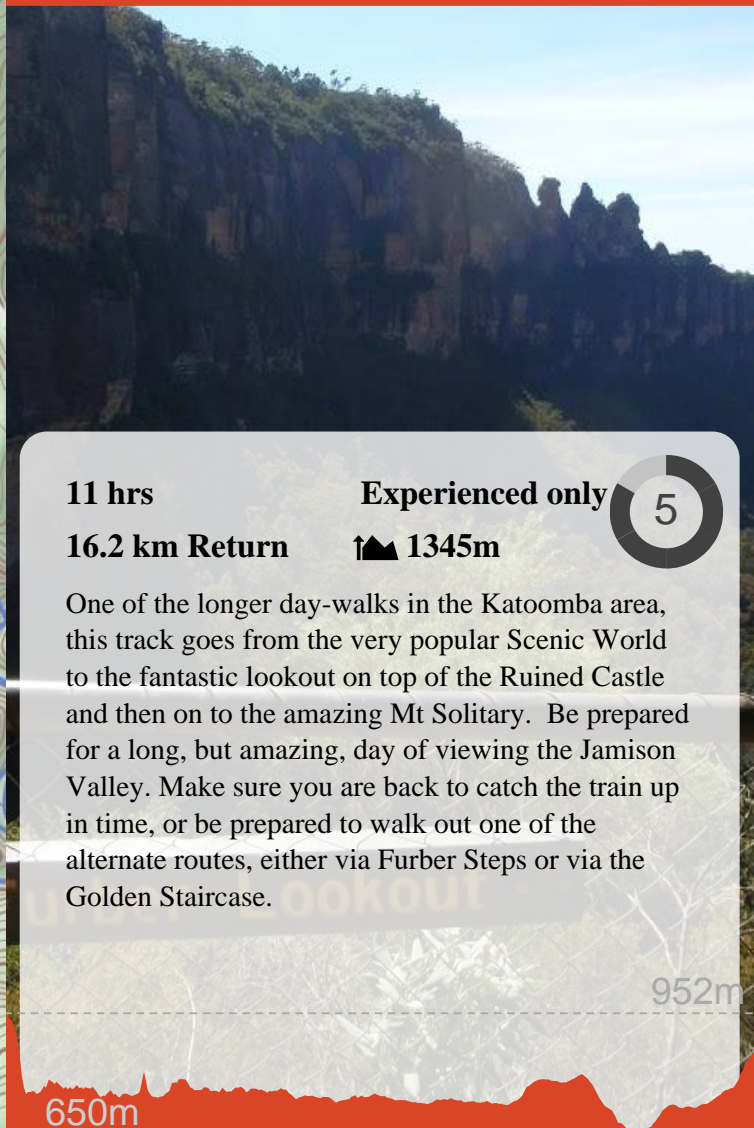


Scenic Railway to Mt Solitary via the Ruined Castle



11 hrs

Experienced only

5

16.2 km Return

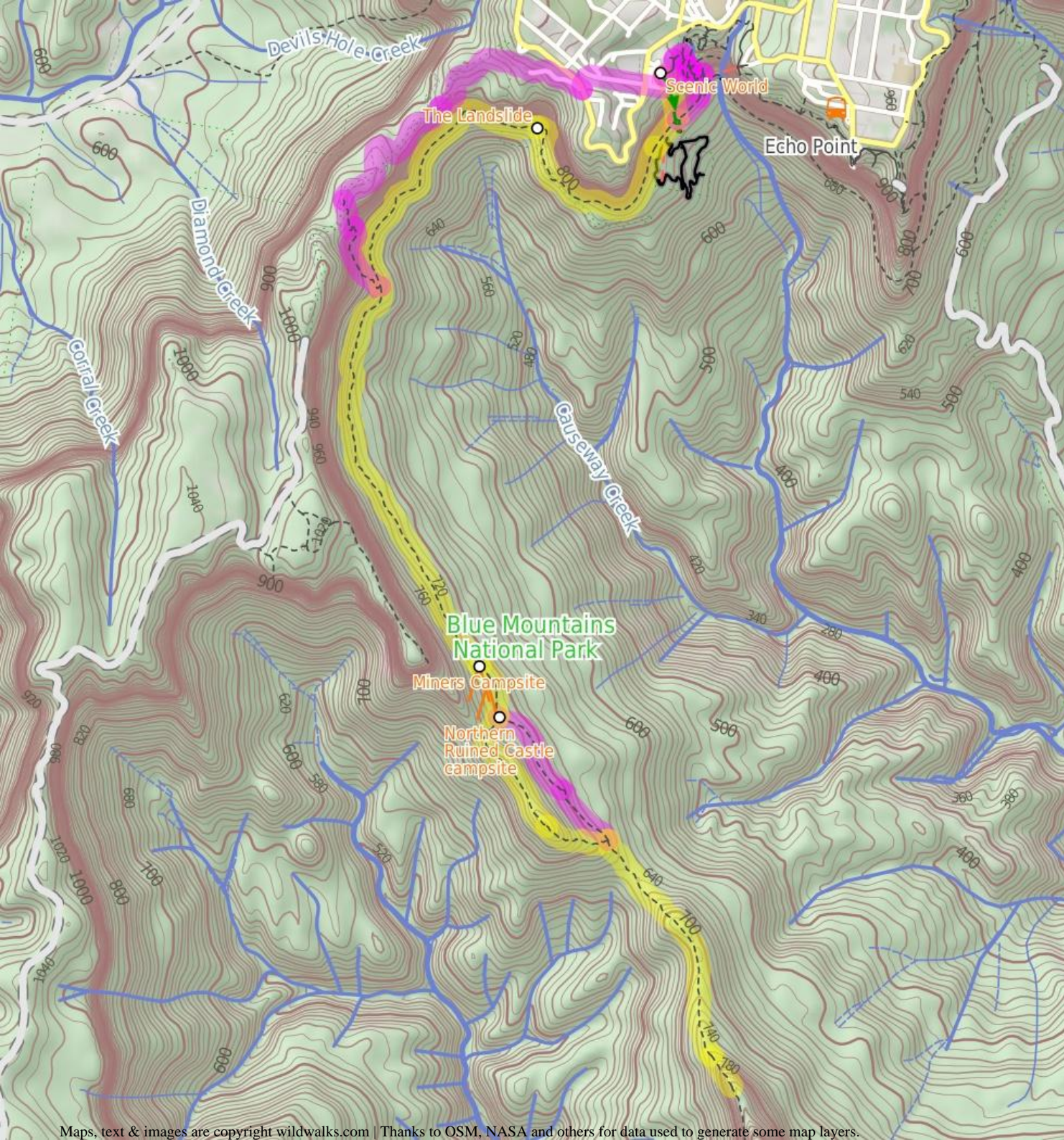
▲ 1345m

One of the longer day-walks in the Katoomba area, this track goes from the very popular Scenic World to the fantastic lookout on top of the Ruined Castle and then on to the amazing Mt Solitary. Be prepared for a long, but amazing, day of viewing the Jamison Valley. Make sure you are back to catch the train up in time, or be prepared to walk out one of the alternate routes, either via Furber Steps or via the Golden Staircase.

650m

952m

Blue Mountains National Park



Scenic World

Scenic World is one of the most renowned tourist attractions of Katoomba and the Blue Mountains. Located on the cliffs of the Jamison Valley, visitors can enjoy a ride on the Scenic Railway (the world's steepest incline railway) or the Scenic Cableway, into the Jamison Valley, and explore the Scenic Walkway from the base. Alternatively, the Scenic Skyway offers a bird's eye view over the valley, with a glass floor to enhance the experience. Scenic World also features a revolving restaurant, a cafe and a kiosk, in addition to the documentary theatre and souvenir shop. Rides can be purchased, starting from \$16 for adults and \$10 for children, and combination or family passes are available. [More info.](#)

The Landslide

'The Landslide' is a large rockfall going into the valley approximately 100m. There is a good vantage point for the landslide from under the cliffs to the east, and a great but more distant view from Narrow Neck lookout. The landslide occurred in 1931 after a few days of rumbling. There has been much debate as to whether this event was helped along by erosion and coal mining in the area at the time.

Miners Campsite

This flat campsite beside the Federal Pass walking track about 2.2km south of the intersection at the bottom of the Golden Stairs. There is short constructed stone wall left over from when there area was habited by miners. The campsite is surrounded by a tall forest, bracken ferns and some nice fern trees. There is no water or facilities.

Northern Ruined Castle campsite

A short distance south east of the intersection with the Federal Pass and the northern access track to the Ruined Castle, is a fairly large basic campsite. There are two main flat areas for camping, both with fire scars. The area is surround with tall trees and ferns. There is no water nor any other facilities.

Before You walk

Bushwalking is fun and a wonderful way to enjoy our natural places. Sometimes things go bad, with a bit of planning you can increase your chance of having an enjoyable and safer walk. Before setting off on your walk check

- 1) Weather Forecast ([BOM Central Tablelands District](#))
- 2) Fire Dangers ([Greater Sydney Region](#))
- 3) Park Alerts ([Blue Mountains National Park](#))
- 4) Research the walk to check your party has the skills, fitness and equipment required
- 5) Agree to stay as a group and not leave anyone to walk solo

Think before you TREK

The 'Think before you TREK' program developed by NSW Police & NPWS promotes the benefits of planning ahead for your bushwalking trip by using an easy to remember acronym:

- T** Take adequate supplies of food, water, navigation and first aid equipment.
- R** Register your planned route and tell friends and family when you expect to return.
- E** Emergency beacon (PLB's) should be carried on walks with significant gaps in mobile coverage (check terrain profile).
- K** Keep to your planned route and follow the map and walking trails.

Topo Maps

The maps provided on wildwalks are helpful, but there are times where you may need maps covering a broader area. Maps that cover this walk include;

1:50 000 Map Series:Six Foot Track

1:25 000 Map Series:89302N JAMISON, 89301S KATOOMBA

1:100 000 Map Series:8930 KATOOMBA

Grade

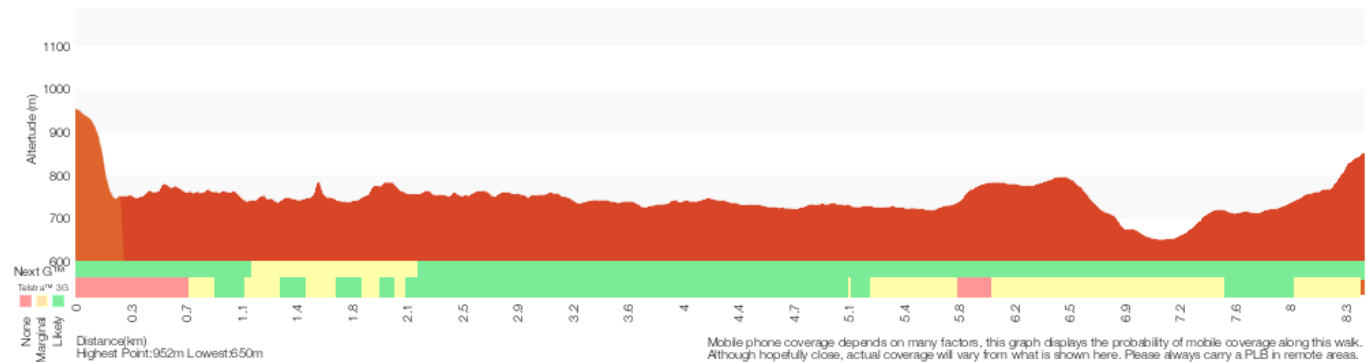
This walk has been graded using the AS 2156.1-2001. The overall grade of the walk is determined by the highest classification along the whole track.



Grade 5/6
Experienced only

Length	16.2 km Return
Time	11 hrs
Quality of track	Rough unclear track (5/6)
Signs	No directional signs (5/6)
Experience Required	High level of bushwalking experience recommended (5/6)
Weather	Forecast, unforecast storms and severe weather may impact on navigation and safety (4/6)
Infrastructure	No facilities provided (5/6)

*** This walk passes through very remote areas and sections have no visible track. At least one person in your group should have training and experience in off track walking and navigation. Even with these notes and a GPS these extra skills and equipment are required.**



Are you ready to have fun?

Please ensure you and your group are well prepared and equipped for all possible hazards and delays. Check park closures, weather information and Fire Danger Rating before setting out. Optional side trips and alternate routes noted are not included in this walk's overall grade, length or time estimate. Please allow extra time for resting and exploring areas of interest. The authors, staff and owners of wildwalks take care in preparing this information but will not accept responsibility for any inconvenience, loss or injury you may experience. Please take care, have fun - Happy Walking. **Experienced walkers only: This walk passes through very remote areas and sections have no visible track. At least one person in your group should have training and experience in off track walking and navigation. Even with these notes and a GPS these extra skills and equipment are required.**

Getting there You can get to Scenic World (gps: -33.7286, 150.301) by car or bus. Car: There is free parking available.

This is a return, so you will finish back at the start.

Find up to date and more information including; travel directions, weather, park closures and walker feedback at <http://wild.tl/srtmsvtrc>

0 | Scenic World

Scenic World is one of the most renowned tourist attractions of Katoomba and the Blue Mountains. Located on the cliffs of the Jamison Valley, visitors can enjoy a ride on the Scenic Railway (the world's steepest incline railway) or the Scenic Cableway, into the Jamison Valley, and explore the Scenic Walkway from the base. Alternatively, the Scenic Skyway offers a bird's eye view over the valley, with a glass floor to enhance the experience. Scenic World also features a revolving restaurant, a cafe and a kiosk, in addition to the documentary theatre and souvenir shop. Rides can be purchased, starting from \$16 for adults and \$10 for children, and combination or family passes are available. [More info.](#)

0 | Scenic World

(300 m 26 mins) From Scenic World, this walk goes down the cliffs using the Scenic Railway. Hang on tight! This 415m-long journey is the world's steepest railway. At the bottom, the track comes to a great viewing platform of the valley. Use of the railway costs \$10 for adults and \$5 for children one-way. Last train normally at 4:45pm (opens at 9am) [More info.](#)

0.3 | Alternate Route Scenic Railway (Bottom Platform) t

(870 m 28 mins) Turn right: From the Scenic Railway Platform, this walk heads north-east (keeping the valley on the right), soon passing through the gate signposted 'Blue Mountains National Park', and then along the bush track. This goes along the flat, next to the cliffs, until reaching the bottom of a set of stairs on the left, signposted as the 'Furber Steps'.

Turn left: From the intersection, this walk heads up the stairs. After the first section, the walk flattens out slightly as it zigzags up the hill. The track also goes under several large overhangs before coming to an intersection and a 'Vera's Grotto' sign.

Turn left: From the intersection, this walk follows the 'Scenic Skyway' sign up the wooden steps and across the short wooden boardwalk to the other side. The track continues with the hand railing on the left, until reaching the base of the Furber Steps. From here, the walk continues up the concrete steps, zigzagging steeply up the side of the cliff, until reaching the Furber Lookout at the base of the last flight of steps.

Continue straight: From the Furber Lookout, this walk heads up the concrete stairs, climbing to the top. The walk passes the 'Furber Steps' signpost and continues along the bush track, winding up along the side of the hill until coming to the intersection of the Furber Steps and the Lynes Point tracks.

Turn left : From the lookout, this walk follows the bush track, heading down the short metal staircase to the intersection of the Lynes Point bush track at the bottom.

Continue straight: From the lookout, this walk heads up the stairs, climbing to the top. Here it continues along the bush track, winding past a large rock overhang with a bench seat underneath and through the forest for a short while, to the signposted intersection of the 'Underfalls Walk'.

Continue straight: From the intersection, the track follows the bush track heading up the hill, winding up through the forest for a short while. Soon the track bends slightly around to the right and comes to the Rainforest Lookout, at the base of the set of wooden steps.

Turn left : From the Rainforest Lookout, this walk heads up the wooden steps, climbing to the top where it comes to a 'T' intersection with the 'Round Walk' track.

Turn left: From the intersection, this walk follows the 'Scenic Skyway' sign down the wooden steps, then flattens out for a short distance before continuing up the other side, climbing up the long, steep set of wooden steps. At the top, the walk comes to the intersection of the Round Walk and the Juliets Balcony track (unsignposted).

Veer right: From the intersection, this walk heads to the top of the metal stairs. The track then continues steeply up through the bush, climbing to Vanimans Lookout.

Turn left: From Vanimans Lookout, this walk heads up the wooden steps, climbing up the hill through the bush until it comes to the intersection with the Prince Henry Cliff Walk.

Turn left: From the intersection, this walk follows the only unsignposted bush track up the gentle hill. It winds up the wooden steps, bending around to the left until it flattens out at the intersection with the Scenic World footbridge.

Continue straight: From the intersection, this walk heads along the wooden footbridge that winds around the back of the Scenic World multi-story car park, to the concrete footpath. The walk continues around the main building, climbing up some concrete steps to the main entrance of Scenic World.

0.3 | Scenic Railway (Bottom Platform)

(190 m 6 mins) Turn left : From the bridge over the bottom of the Scenic Railway, this walk follows the signs to 'scenic walkway', passing a replica of a mining cart, as well as an old mine. Just past this, the walk comes to a pipeline that runs down the hill collecting fresh water, signposted as drinkable. Continuing past the old mine shafts along the boardwalk, this walk comes to an intersection with a bush track going slightly off to the right. This is signposted as the way to the Landslide.

0.49 | Int of Scenic Railway Boardwalk and Landslide Bush

(1.2 km 40 mins) Continue straight: From the intersection, the walk follows the wide track and signposts towards the 'landslide' (keeping the cliffs on the right). The walk winds along a bush track with small boulders strewn along it. There are a number of old mine shafts just off the track and some interesting historical items. The track continues under Malaita Point before breaking out of the vegetation to a worthy view of the valley, just before the landslide. As the track comes to the old landslide site, it becomes rougher with plenty of boulders over the track. There are also excellent views of the cliffs above and the landslide as the vegetation is quite sparse here.

1.64 | The Landslide

'The Landslide' is a large rockfall going into the valley approximately 100m. There is a good vantage point for the landslide from under the cliffs to the east, and a great but more distant view from Narrow Neck lookout. The landslide occurred in 1931 after a few days of rumbling. There has been much debate as to whether this event was helped along by erosion and coal mining in the area at the time.

1.64 | Landslide

(1.6 km 42 mins) Continue straight: From the eastern side of the Landslide, the walk heads across the face of the landslide (keeping the cliff on the right).

At this point, the track is quite rough, with frequent boulders making it a slight scramble. On the other side of the landslide, the track narrows and becomes a flat bush track that follows the base of the cliffs. The surrounding trees become quite dense again, adding quite an ambience to the area. The walk heads along the bottom of the Narrow Neck escarpment, until coming to an intersection with a set of stairs off to the right, signposted as the 'Golden Staircase'.

3.19 | Alternate Route Bottom of Golden Staircase to Scen

(3 km 1 hr 26 mins) Turn right: From the intersection, this walk follows the 'Golden Stairs car park' sign uphill past the termite mound then past the 'Warning - Sections of the Golden Stairs are unfenced and can be slippery when wet' sign. The walk heads up the broad spur along a narrow track, and before long, starts to climb the first set of rock and metal stairs. After this climb, the track is relatively flat for a little while before another climb up similar stairs. Then the walk makes its way around a gully to the base of a cliff. From here the track is flat for a while, heading between the cliff and the fence for about 100m, (passing a 'Caution Rockfall Hazard' sign) before another, smaller climb, up through a gap in the rock to the fenced and signposted 'Botting's L.O.'.

Turn left: From Botting's Lookout, the walk heads up the hill where the track then turns left. The walk continues, steeply in a couple of places, up some eroded sections of track and through a couple of switchbacks. Soon the narrow track mostly flattens out, leading to the signposted 'Golden Stairs' car park on Glenraphael Dr.

Veer right: From the Golden Stairs car park, this walk follows the dirt road north, down the gentle hill and along the ridge as it undulates up and down for about 1km, before reaching the Sydney Water management trail - this is closed to the public at all times.

Veer right: From the intersection, this walk follows the dirt road heading up the hill and undulating along the ridge for about 1km, before it climbs up to the intersection with Cliff Drive.

Turn sharp left: From the intersection, this walk heads up Cliff Drive briefly, then follows the management trail on the right, just past the house. At the end of the trail, this walk turns right onto Violet Street, following this to the front entrance of Scenic World.

3.19 | Bottom of Golden Staircase

(2.3 km 51 mins) Continue straight: From the intersection, this walk follows the 'Federal Pass - Ruined Castle' sign along the flat wide track, keeping the valley to your left. This track follows the old horse-drawn coal tram route. The track leads through a tall rainforest filled with fern trees and vines, with the occasional lyrebird. After about 1.3km the forest opens up, letting in more light and exposing some distant filtered views. After wandering through the more open forest for about 250m, the track passes a small campsite (on the right). This walk continues for another 700m along the main track through the bracken fern forest to find a larger campsite (just up to the right) with a short stone wall on one side).

5.45 | Miners Campsite

This flat campsite beside the Federal Pass walking track about 2.2km south of the intersection at the bottom of the Golden Stairs. There is short constructed stone wall left over from when there area was habited by miners. The campsite is surrounded by a tall forest, bracken ferns and some nice fern trees. There is no water or facilities.

5.45 | Miners Campsite

(300 m 7 mins) Continue straight: From the miners campsite, this walk follows the clear track south-west, keeping the valley to your left. The mostly flat track narrows a bit as it leads past a large flat area (on your right) after about 140m, then past a smaller campsite a short distance later. The track

then winds through the forest for another 100m to come to a clearing and signposted three-way intersection, where there is a 'Federal Pass - Katoomba' sign pointing back along the track. (There is a campsite a few metres further on and to the left.)

5.75 | Northern Ruined Castle campsite

A short distance south east of the intersection with the Federal Pass and the northern access track to the Ruined Castle, is a fairly large basic campsite. There are two main flat areas for camping, both with fire scares. The area is surrounded with tall trees and ferns. There is no water nor any other facilities.

5.75 | Alternate Route Northern Ruined Castle campsite to

(550 m 12 mins) Continue straight: From the intersection, this walk follows the 'Mount Solitary' sign past the campsite (on your left) and past the 'Warning - Remote area indistinct route steep terrain - Exposed climbing loose surfaces - No reliable water Carry plenty Sterilise any water found on route' sign. This walk continues along the mostly flat track, passing through a tall turpentine forest for about 450m where you come into view of a campsite (down to your left). The walk continues a short distance further, coming to an intersection where there is a fair amount of coal on the ground, a campsite down to your left and the entrance to an old small coal mine (behind a rock) on your right. Now Continue straight to rejoin the main walk .

5.75 | Alternate Route Ruined Castle mine campsite to Int

(380 m 11 mins) Continue straight: From the intersection, this walk follows the main track south-east, initially keeping the campsite and valley to your left. The track initially heads down a short rocky section then flattens out to pass a large square boulder after about 100m. The track continues through ferny forest for just over 200m, then passes another campsite (down a steep hill to your left), and about 30m further on, comes to a signposted intersection where a 'Katoomba' arrow points back along the track. Now Continue straight to rejoin the main walk .

5.75 | Northern Ruined Castle campsite

(730 m 20 mins) Turn right: From the intersection, this walk follows the 'Ruined Castle' sign uphill along the eroded track and soon passes the yellow 'Warning - Remote area indistinct route steep terrain - Exposed climbing loose surfaces - No reliable water Carry plenty Sterilise any water found on route' sign. The track winds up the wide valley getting steeper as it goes, climbing up onto the main ridgeline. Here the walk turns left (away from the view of Castle Head) and follows the rocky track more gently uphill for about 220m to pass under the side of a large boulder. The track continues along the narrow ridge for about 280m, with some filtered views past another large boulder to the base of the tall Ruined Castle summit. Here the walk heads gently down a bit (keeping the rock wall to your left), past a crevice, then follows the main track to the other (southern) side of the summit. The track then heads up again to find a number of rocky pinnacles.

6.48 | Ruined Castle

(390 m 12 mins) Continue straight: From near the summit of Ruined Castle, this walk heads south-east along the main ridgeline, initially keeping the rock wall to your left. The track follows the rocky ridgeline gently downhill and after about 70m the track starts to become much steeper. The track winds down, flattening out for a short time before continuing steeply down to a sign posted three-way intersection just beyond the 'Ruined Castle to Mount Solitary' map. There is a 'Ruined Castle' arrow here, pointing back up the hill.

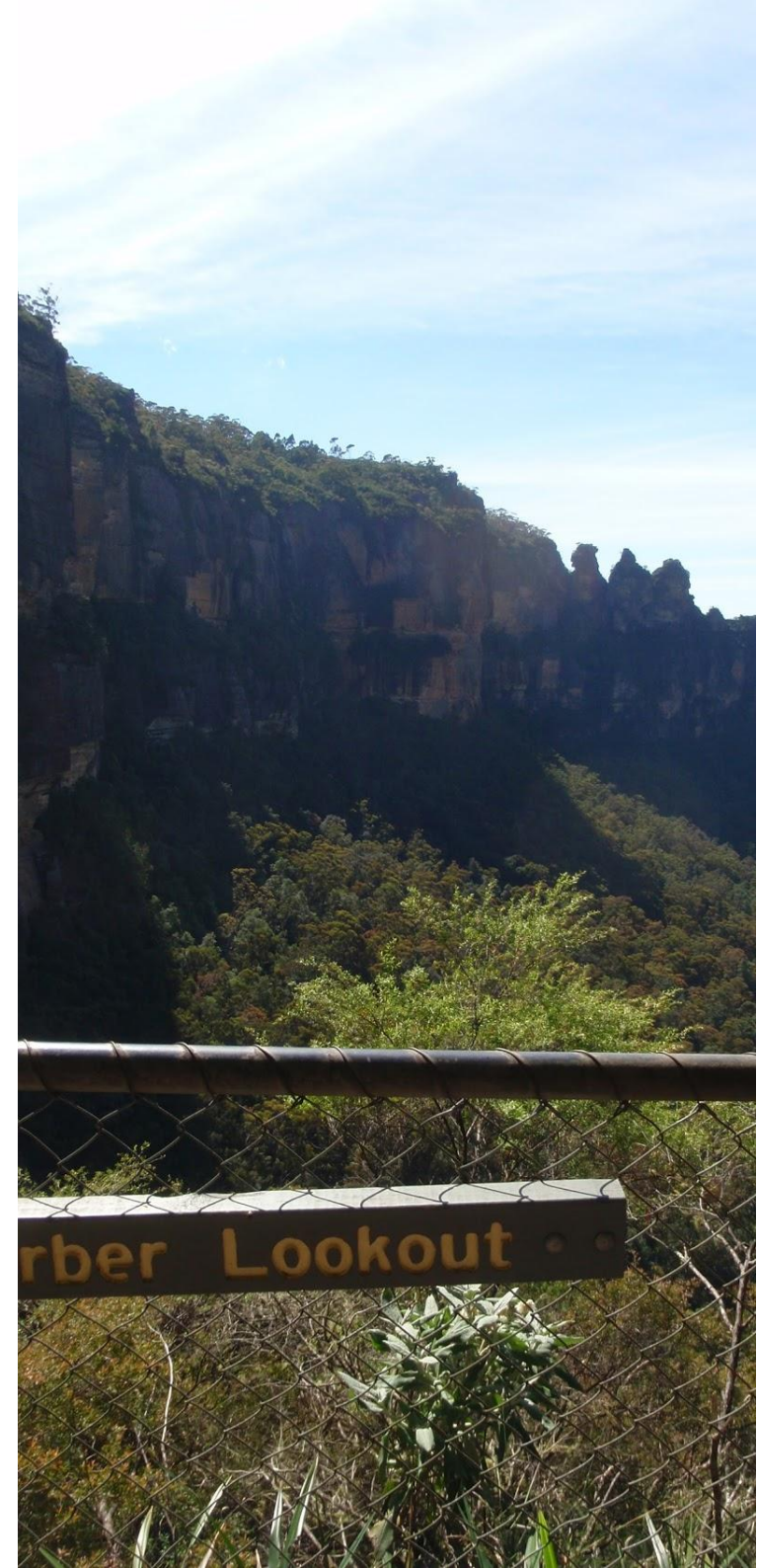
6.87 | Intersection South of Ruined Castle

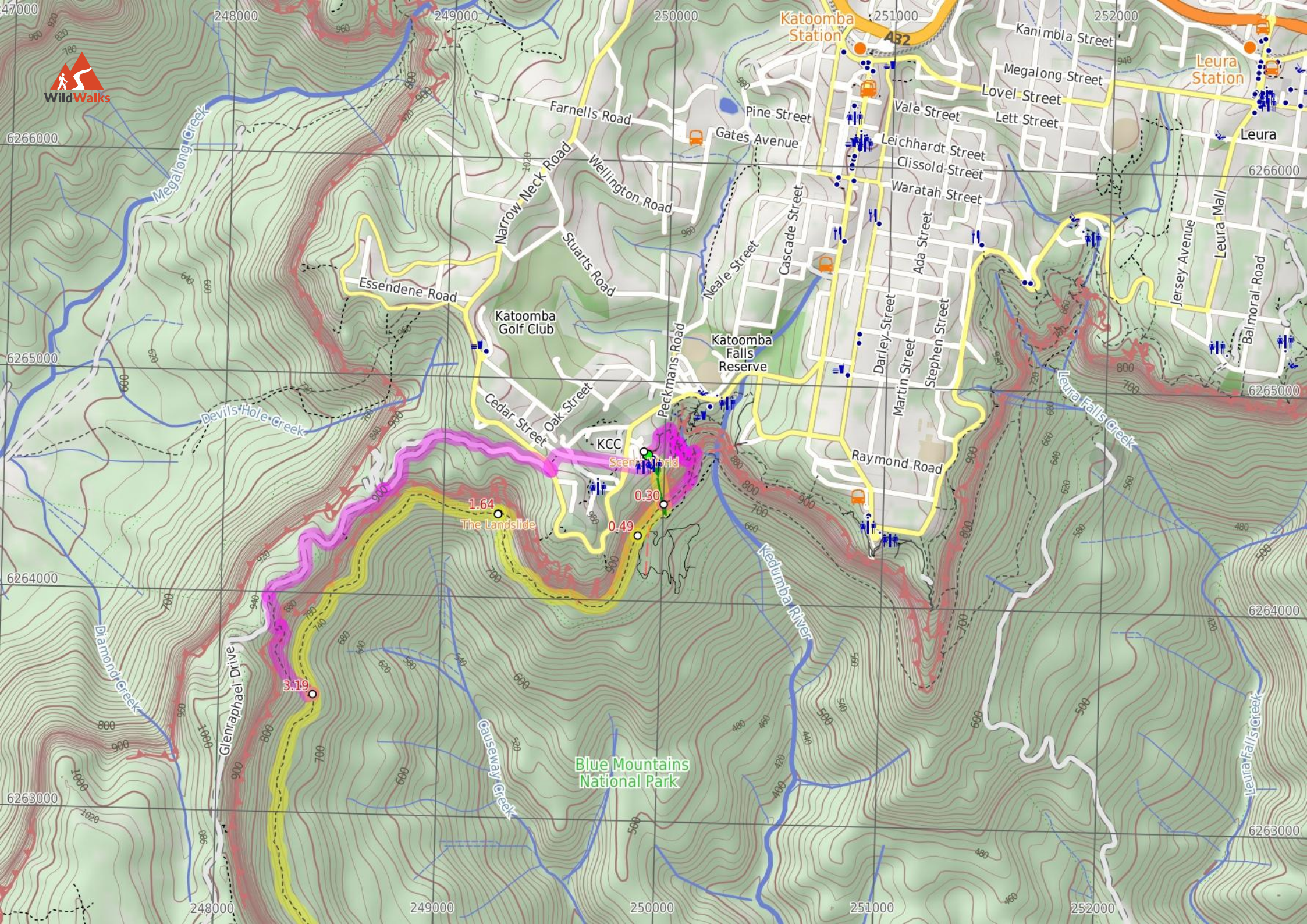
(1.3 km 35 mins) Turn right: From the intersection, this walk follows the 'Mount Solitary' sign gently downhill along the fairly narrow track, keeping the main valley to your left. After about 300m, the more eroded and rocky

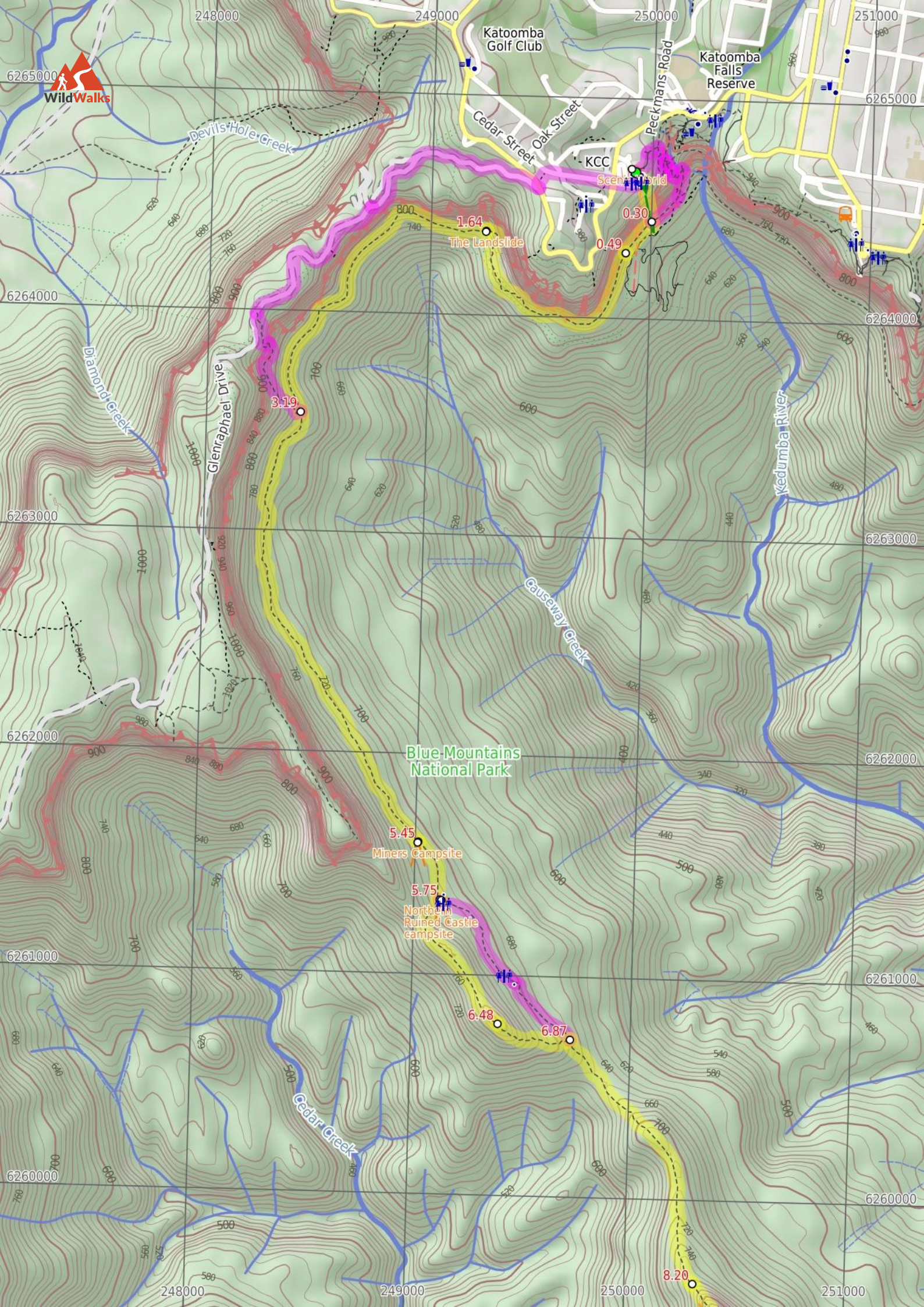
track begins to climb the ridge and after climbing for just shy of 300m, the track flattens out and passes a couple of small clearings - the second clearing is just past where the track leads downhill. Just after the second clearing (used as a campsite), the track begins to climb up the ridge again. This track climbs up a few rocky eroded sections and soon comes to the base of a tall series of rockwalls - the Korrowall Knife-edge.

8.2 | Bottom of Korrowall Knife-edge

(200 m 12 mins) Continue straight: From the base of the rocks, this walk starts the arduous climb up the Korrowall Knife-edge. Ascending the Korrowall Knife-edge is a hard climb, vertical in places and much of the climbing will involve both hands - some people use ropes to help lift heavy packs. This walk initially heads around to the left of the first boulder to head up through the eroded steep valley between the rocks. The walk continues to scramble up the side of the rocks, then climbs vertically up a crack in the rock to a small flat area, offering the first distant view for this climb. The walk continues by climbing up a 3m rock wall, then up the eroded track before climbing up through the obvious gap in the next rock wall. At the top of this climb is another great view and a short distance further up, this faint track passes a rock with a hole/cave (on your right). From here, the walk follows the worn track up through a couple more rock gullies, still generally keeping the rock wall to your right (and passing a couple of arrows). This brings the walk to an exposed flat area, with red dirt and fantastic views. The walk continues by climbing up through the next eroded gully to the top of the Korrowall Knife-edge, where there is a large rock wall on your left.







Summary navigation sheet for the Scenic Railway to Mt Solitary via the Ruined Castle



km	From	Up/Dwn	Length	Initial directions (Use full tracknotes and maps for more detail)
Start	Scenic World -33.7286,150.301 (GR Katoomba, 499647)	8 -210	300 m 26 mins	From Scenic World, this walk goes down the cliffs using the Scenic Railway.
0.30	Scenic Railway (Bottom Platform) -33.7306,150.3017 (GR Katoomba, 500644)	248 -46	870 m 28 mins	Alternate Route Scenic Railway (Bottom Platform). Turn right: From the Scenic Railway Platform, this walk heads north-east (keeping the valley on the right), soon passing through the gate signposted 'Blue Mountains National Park', and then along the bush track.
0.30	Scenic Railway (Bottom Platform) -33.7306,150.3017 (GR Katoomba, 500644)	25 -17	190 m 6 mins	Turn left : From the bridge over the bottom of the Scenic Railway, this walk follows the signs to 'scenic walkway', passing a replica of a mining cart, as well as an old mine.
0.49	Int of Scenic Railway Boardwalk and Landslide Bush Track -33.7319,150.3005 (GR Katoomba, 499643)	150 -161	1.2 km 40 mins	Continue straight: From the intersection, the walk follows the wide track and signposts towards the 'landslide' (keeping the cliffs on the right).
1.64	Landslide -33.731,150.2936 (GR Katoomba, 493644)	128 -123	1.6 km 42 mins	Continue straight: From the eastern side of the Landslide, the walk heads across the face of the landslide (keeping the cliff on the right).
3.19	Bottom of Golden Staircase -33.7384,150.2845 (GR Katoomba, 484635)	420 -213	3 km 1 hr 26 mins	Alternate Route Bottom of Golden Staircase. Turn right: From the intersection, this walk follows the 'Golden Stairs car park' sign uphill past the termite mound then past the 'Warning - Sections of the Golden Stairs are unfenced and can be slippery when wet' sign.
3.19	Bottom of Golden Staircase -33.7384,150.2845 (GR Katoomba, 484635)	104 -129	2.3 km 51 mins	Continue straight: From the intersection, this walk follows the 'Federal Pass - Ruined Castle' sign along the flat wide track, keeping the valley to your left.
5.45	Miners Campsite -33.756,150.2903 (GR Jamison, 490616)	16 -11	300 m 7 mins	Continue straight: From the miners campsite, this walk follows the clear track south-west, keeping the valley to your left.
5.75	Northern Ruined Castle campsite -33.7584,150.2913 (GR Jamison, 491613)	12 -31	550 m 12 mins	Alternate Route Northern Ruined Castle campsite. Continue straight: From the intersection, this walk follows the 'Mount Solitary' sign past the campsite (on your left) and past the 'Warning - Remote area indistinct route steep terrain - Exposed climbing loose surf...
5.75	Ruined Castle mine campsite -33.7618,150.295 (GR Jamison, 495610)	10 -46	380 m 11 mins	Alternate Route Ruined Castle mine campsite. Continue straight: From the intersection, this walk follow the main track south-east, initially keeping the campsite and valley to your left.
5.75	Northern Ruined Castle campsite -33.7584,150.2913 (GR Jamison, 491613)	82 -17	730 m 20 mins	Turn right: From the intersection, this walk follows the 'Ruined Castle' sign uphill along the eroded track and soon passes the yellow 'Warning - Remote area indistinct route steep terrain - Exposed climbing loose s...
6.48	Ruined Castle -33.7635,150.2942 (GR Jamison, 494608)	1 -123	390 m 12 mins	Continue straight: From near the summit of Ruined Castle, this walk heads south-east along the main ridgeline, initially keeping the rock wall to your left.
6.87	Intersection South of Ruined Castle -33.7641,150.2977 (GR Jamison, 497607)	132 -38	1.3 km 35 mins	Turn right: From the intersection, this walk follows the 'Mount Solitary' sign gently downhill along the fairly narrow track, keeping the main valley to your left.
8.20	Bottom of Korrowall Knife-edge -33.7741,150.3037 (GR Jamison, 503596)	86 -2	200 m 12 mins	Continue straight: From the base of the rocks, this walk starts the arduous climb up the Korrowall Knife-edge.